

Stainless steel furniture for medical facilities and clean rooms. We offer a range of standard products and manufacture non-standard furniture.

We always work closely with the customer to create optimal solutions.

Tables

Electrical Height adjustable table with shelf



- Made of Stainless steel.
- Size: length – from 800 to 2900 mm, width – from 600 to 700 mm, height – 850, 900 mm
- Top plate thickness 0,8 mm, height 40 mm, backsplash 60 mm, reinforced with bilaminate chipboard 18 mm thickness.
- Legs are made from 50×50 and 40×40 tubular with adjustable working height 200 mm + 55 mm range. Back legs are 100 mm from the back wall.
- Electrical components “Linak”
- <2000 mm in length – 4 legs.
- >2000 mm in length – 6 legs.
- Shelf made with reinforcement in the middle, install 215 mm top surface from ground

Flat Pack table with shelf



- Made of Stainless steel.
- Size: length – from 400 to 2000 mm, width – from 600 to 700 mm, height – 850, 900 mm
- Top plate thickness 0,8 mm, height 40 mm, backsplash 60 mm, reinforced with bi-laminate chipboard 18 mm thickness.
- Legs are made from 40×40 tubular with adjustable working height 55 mm range.
- Shelf made with reinforcement in the middle, install 215 mm top surface from ground.

Table with shelf



- Made of Stainless steel.
- Size: length – from 400 to 2900 mm, width – from 600 to 700 mm, height – 850, 900 mm
- Top plate thickness 0,8 mm, height 40 mm, backsplash 60 mm, reinforced with bilaminate chipboard 18 mm thickness.
- Legs are made from 40×40 tubular with adjustable working height 55 mm range.
- Back legs are 100 mm from the back wall.
- <2000 mm in length – 4 legs.
- >2000 mm in length – 6 legs.
- Shelf made with reinforcement in the middle, install 215 mm top surface from the ground.

Table



- Made of Stainless steel.
- Size: length – from 400 to 2900 mm, width – from 600 to 700 mm, height – 850, 900 mm
- Top plate thickness 0,8 mm, height 40 mm, backsplash 60 mm, reinforced with bilaminate chipboard 18 mm thickness.
- Legs are made from 40×40 tubular with adjustable working height 55 mm range. Back legs are 100 mm from the back wall.
- <2000 mm in length – 4 legs.
- >2000 mm in length – 6 legs.
- Lower frame made of stainless steel 25×25 tubular.

Table with sliding doors



- Made of Stainless steel.
- Size: length – from 600 to 2900 mm, width – from 600 to 700 mm, height – 850, 900 mm
- Top plate thickness 0,8 mm, height 40 mm, backsplash 60 mm, reinforced with bilaminate chipboard 18 mm thickness.
- Legs are made from 40×40 tubular with adjustable working height 55 mm range.
- Back legs are 100 mm from the back wall.
- <2000 mm in length – 4 legs.
- >2000 mm in length – 6 legs.
- Shelf made with reinforcement in the middle, install 215 mm top surface from the ground.
- Door with recessed handle. Sliding double doors are on ball bearings.

Table with hinged doors



- Made of Stainless steel
- Size: length – from 600 to 2900 mm, width – from 600 to 700 mm, height – 850, 900 mm
- Top plate thickness 0,8 mm, height 40 mm, backsplash 60 mm, reinforced with bilaminate chipboard 18 mm thickness
- Legs are made from 40×40 tubular with adjustable working height 55 mm range
- Back legs are 100 mm from the back wall
- <2000 mm in length – 4 legs
- >2000 mm in length – 6 legs
- Shelf made with reinforcement in the middle, install 215 mm top surface from ground
- Door with recessed handle
- Open double doors are with magnet and rotation opening

Table without backsplash



- Made of Stainless steel.
- Size: length – from 400 to 2900 mm, width – from 600 to 700 mm, height – 850, 900 mm
- Top plate thickness 0,8 mm, height 40 mm, reinforced with bilaminate chipboard 18 mm thickness.
- Legs are made from 40×40 tubular with adjustable working height 55 mm range.
- <2000 mm in length – 4 legs.
- >2000 mm in length – 6 legs.
- Lower frame made of stainless steel 25×25 tubular.

Table with shelf without backsplash



- Made of Stainless steel.
- Size: length – from 400 to 2900 mm, width – from 600 to 700 mm, height – 850, 900 mm
- Top plate thickness 0,8 mm, height 40 mm, reinforced with bilaminate chipboard 18 mm thickness.
- Legs are made from 40×40 tubular with adjustable working height 55 mm range.
- <2000 mm in length – 4 legs. >2000 mm in length – 6 legs.
- Shelf made with reinforcement in the middle, install 215 mm top surface from ground.

Electrical Height adjustable table



- Made of Stainless steel.
- Size: length – from 800 to 2900 mm, width – from 600 to 700 mm, height – 850, 900 mm
- Top plate thickness 0,8 mm, height 40 mm, backsplash 60 mm, reinforced with bilaminate chipboard 18 mm thickness.
- Legs are made from 50×50 and 40×40 tubular with adjustable working height 200 mm + 55 mm range. Back legs are 100 mm from the back wall.
- Electrical components “Linak”
- <2000 mm in length – 4 legs.
- >2000 mm in length – 6 legs.
- Lower frame made of stainless steel 25×25 tubular.

Tables with sink

Electrical Height adjustable table with sink



- Made of Stainless steel
- Size: length – from 800 to 2900 mm, width – from 600 to 700 mm, height – 850, 900 mm
- Top plate thickness 0,8 mm, height 40 mm, backsplash 60 mm, reinforced with bilaminate chipboard 18 mm thickness
- Legs are made from 50×50 and 40×40 tubular
- Adjustable working height 200 mm (800-1000 mm) + 55 mm range
- <2000 mm in length – 4 legs
- >2000 mm in length – 6 legs
- Electrical components “Linak”
- Lower frame made of stainless steel 25×25 tubular
- Sink welded with drain hole
- Included siphon plug 1 ½”

Electrical Height adjustable table with sink and shelf



- Made of Stainless steel
- Top plate thickness 0,8 mm, height 40 mm, backsplash 60 mm, reinforced with bilaminate chipboard 18 mm thickness
- Legs are made from 50×50 and 40×40 tubular
- Adjustable working height 200 mm (800-1000 mm) + 55 mm range
- <2000 mm in length – 4 legs
- >2000 mm in length – 6 legs
- Electrical components “Linak”
- Shelf made with reinforcement in the middle, install 215 mm top surface from ground
- Sink welded with drain hole
- Included siphon plug 1 ½”

Table with sink and shelf



- Made of Stainless steel
- Size: length – from 600 to 2900 mm, width – from 600 to 700 mm, height – 850, 900 mm
- Top plate thickness 1,2 mm, height 40 mm, backsplash 60 mm, reinforced with bilaminate chipboard 18 mm thickness
- Legs are made from 40×40 tubular with adjustable working height 55 mm range
- Back legs are 100 mm from the back wall
- <2000 mm in length – 4 legs
- >2000 mm in length – 6 legs
- Shelf made with reinforcement in the middle, install 215 mm top surface from ground
- Sink welded with drain hole
- Included siphon plug

Table with sink



- Made of Stainless steel
- Size: length – from 600 to 2900 mm, width – from 600 to 700 mm, height – 850, 900 mm
- Top plate thickness 1,2 mm, height 40 mm, backsplash 60 mm, reinforced with bilaminate chipboard 18 mm thickness
- Legs are made from 40×40 tubular with adjustable working height 55 mm range
- Back legs are 100 mm from the back wall
- <2000 mm in length – 4 legs
- >2000 mm in length – 6 legs
- Sink welded with drain hole
- Included siphon plug

Hand basin



- Made of Stainless steel
- Size: length – 400 mm, width – 295 mm, height – 250 mm
- Sink welded with drain hole
- Backsplash 30 mm height
- Sink dimension 350x250x110 mm
- Knee operated faucet
- Connection for cold-hot water supply
- Included siphon plug

Table with sink and sliding doors



- Made of Stainless steel
- Size: length – from 600 to 2900 mm, width – from 600 to 700 mm, height – 850, 900 mm
- Top plate thickness 1,2 mm, height 40 mm, backsplash 60 mm, reinforced with bilaminate chipboard 18 mm thickness
- Legs are made from 40×40 tubular with adjustable working height 55 mm range
- Back legs are 100 mm from the back wall
- <2000 mm in length – 4 legs
- >2000 mm in length – 6 legs
- Shelf made with reinforcement in the middle, install 215 mm top surface from ground
- Door with recessed handle
- Sliding double doors are on ball bearings
- Sink welded with drain hole
- Included siphon plug

Table with sink and hinged doors



- Made of Stainless steel
- Size: length – from 600 to 2900 mm, width – from 600 to 700 mm, height – 850, 900 mm
- Top plate thickness 1,2 mm, height 40 mm, backsplash 60 mm, reinforced with bilaminate chipboard 18 mm thickness
- Legs are made from 40×40 tubular with adjustable working height 55 mm range
- Back legs are 100 mm from the back wall
- <2000 mm in length – 4 legs
- >2000 mm in length – 6 legs
- Shelf made with reinforcement in the middle, install 215 mm top surface from ground
- Door with recessed handle
- Open double doors are with magnet and rotation opening
- Sink welded with drain hole
- Included siphon plug

Table tops

Table top



- Made of Stainless steel.
- Size: length – from 400 to 2900 mm, width – from 600 to 700 mm
- Top plate thickness 0,8 mm, height 40 mm, backsplash 60 mm, reinforced with bilaminate chipboard 18 mm thickness.

Table top without backsplash



- Made of Stainless steel.
- Size: length – from 400 to 2900 mm, width – from 600 to 700 mm, height – 40 mm
- Top plate thickness 0,8 mm, reinforced with bilaminate chipboard 18 mm thickness.

Stands

Stand for dishwasher



- Made of Stainless steel
- Size: length – 600 mm, width – 600 mm, height – 600 mm
- Legs are made from 40×40 tubular with adjustable working height 55 mm range

Stand for oven with shelf



- Made of Stainless steel
- Size: length – 300 to 1500 mm, width – from 550 to 700 mm
- Legs are made from 40×40 tubular with adjustable working height 55 mm range

Stand for oven with guides



- Made of Stainless steel
- Size: length – from 600 to 1000 mm, width – from 600 to 900 mm
- Legs are made from 40×40 tubular with adjustable working height 55 mm range

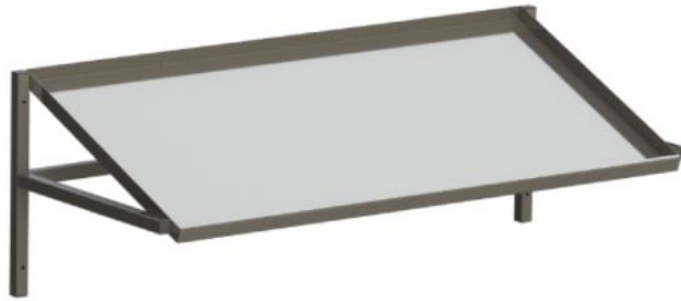
Electrical Height adjustable table



- Made of Stainless steel.
- Size: length – from 800 to 2900 mm, width – from 600 to 700 mm, height – 850, 900 mm
- Top plate thickness 0,8 mm, height 40 mm, backsplash 60 mm, reinforced with bilaminate chipboard 18 mm thickness.
- Legs are made from 50×50 and 40×40 tubular with adjustable working height 200 mm + 55 mm range. Back legs are 100 mm from the back wall.
- Electrical components “Linak”
- <2000 mm in length – 4 legs.
- >2000 mm in length – 6 legs.
- Lower frame made of stainless steel 25×25 tubular.

Shelves

Shelf for dishwasher basket



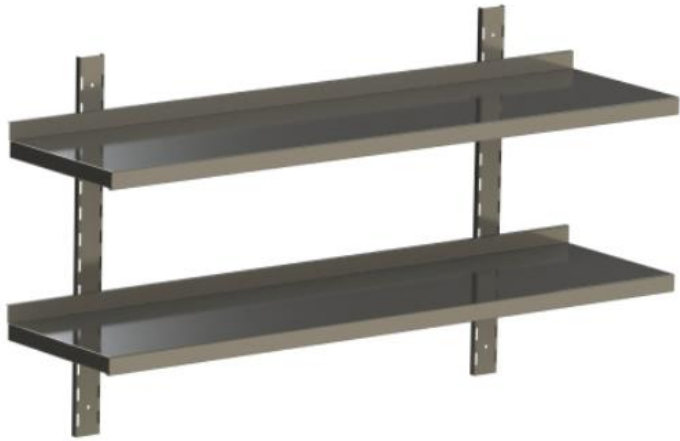
- Made of Stainless steel
- Size: length – from 600 to 2100 mm, width – 520 mm, height – 400 mm

Wall single shelf



- Made of Stainless steel
- Size: length – from 600 to 2900 mm, width – 300, 400 mm, height – 315 mm
- Backsplash 30 mm height
- Easy height adjustable

Wall double shelves



- Made of Stainless steel
- Size: length – from 600 to 2900 mm, width – 300, 400 mm, height – 630 mm
- Backsplash 30 mm height
- Easy height adjustable

Wall triple shelves



- Made of Stainless steel
- Size: length – from 600 to 2900 mm, width – 300, 400 mm, height – 945 mm
- Backsplash 30 mm height
- Easy height adjustable

Single shelf on table



- Made of Stainless steel
- Size: length – from 800 to 2900 mm, width – 300, 400 mm, height – 350 mm

Double shelves on table



- Made of Stainless steel
- Size: length – from 800 to 2900 mm, width – 300, 400 mm, height – 700 mm

Shelving systems

Shelving with 4 shelves



- Made of Stainless steel
- Size: length – from 600 to 2900 mm, width – from 400 to 700 mm, height – 1800 mm
- Legs are made from 40×40 tubular with adjustable working height 55 mm range
- Shelf made with reinforcement in the middle, install 215 mm top surface from ground
- Plastic cup

Trolleys

Trolley for bakery trays



- Made of Stainless steel
- Size: length – 470 mm, width – 600 mm, height – 1700 mm
- Sections: 12, 14, 16, 18, 20
- Hygienic welding
- Set of wheels d100 mm, 2 pcs without brakes, 2 pcs with brakes
- Weld plate with thread
- Trays size – 40 x 60 cm

Trolley for GN trays



- Made of Stainless steel
- Size: length – 395 mm, width – 540, 650 mm, height – 1700 mm
- Hygienic welding
- Set of wheels d100 mm, 2 pcs without brakes, 2 pcs with brakes
- Weld plate with thread

Trolley for dishwasher baskets



- Made of Stainless steel
- Size: width – 560 mm, depth – 500 mm, height – 800, 1700 mm
- Sections: 3, 6, 7, 8, 9
- Hygienic welding
- Set of wheels d100 mm, 2 pcs without brakes, 2 pcs with brakes
- Weld plate with thread

Z-type trolley for GN trays



- Made of Stainless steel
- Size: length – 385 mm, width – 540 mm, height – 1700 mm
- Hygienic welding
- Set of wheels d100 mm, 2 pcs without brakes, 2 pcs with brakes
- Weld plate with thread

Service trolley

Service trolley



- Made of Stainless steel
- Size: length – from 600 to 1000 mm, width – 500, 600 mm, height – 850, 900 mm
- Set of wheels d100 mm, 2 pcs without brakes, 2 pcs with brakes
- Weld plate with thread

Service trolley for GN trays



- Made of Stainless steel
- Size: length – 1200 mm, width – 550 mm, height – 850, 900 mm
- Set of wheels d100 mm, 2 pcs without brakes, 2 pcs with brakes
- Weld plate with thread

Service trolley 3 shelves



- Made of Stainless steel
- Size: length – from 600 to 1000 mm, width – from 500 to 600 mm, height – 850, 900 mm
- Set of wheels d100 mm, 2 pcs without brakes, 2 pcs with brakes
- Weld plate with thread

Wall cupboard

Wall Cupboard



- Made of Stainless steel.
- Size: length – from 600 to 2000 mm, width – 300, 400 mm, height – 660 mm
- Door with recessed handle.
- Sliding double doors are on ball bearings.